



**BLUE OX**  
Towing Doesn't Have to be a Drag™

# Weight Distributing Hitches

## SwayPro™



### Premium Sway Prevention

#### Features:

- Evenly distributes weight over axles of the tow vehicle and trailer
- **Noise-free sway prevention never stops working, even in rain or snow**
- Caster in the hitch head constantly centers the trailer
- Spring bars augment the suspensions of the tow vehicle & trailer
- Rotating latches with clamp-on brackets for quick and easy setup
- Backup without disconnecting
- Powder-coat over e-coat finish
- Pre-installed 2-5/16" hitch ball, 600lb LTW pre-installed 2" inch ball

#### Specifications:

- **Tongue weights available: 350, 550, 750, 1000, 1500 & 2000** (2.5" Shank)
- Gross Towing Weight 20K maximum
- 2" receiver. 2-1/2" receiver shank available

## TrackPro™



### Premium Sway Management

#### Features:

- Evenly distributes weight over axles of the tow vehicle and trailer
- **Manages sway caused by bad roads, wind, and weather**
- Caster in the hitch head constantly centers the trailer
- Spring bars augment the suspensions of the tow vehicle & trailer
- Rigid L-brackets provide additional points of sway controlling friction
- Backup without disconnecting
- Powder-coat over e-coat finish
- Pre-installed 2-5/16" hitch ball, 600lb LTW pre-installed 2" inch ball

#### Specifications:

- **Tongue weights available: 600 (2 inch ball), 800, 1000 & 1300**
- Gross towing weight: 13K maximum
- 2" receiver, 2-1/2" receiver shank available

## 2-Point™



### Best Value Sway Control

#### Features:

- Evenly distributes weight over axles of the tow vehicle and trailer
- **Steel-on-steel friction minimizes sway**
- Round spring bars flex for a controlled ride
- L-Brackets keep spring bars in place
- Pre-installed 2-5/16" hitch ball, 600lb LTW pre-installed 2" inch ball
- Powder-coat over e-coat finish
- Pre-installed 2-5/16" hitch ball, 600lb LTW pre-installed 2" inch ball

#### Specifications:

- **Tongue weights available: 600 (2 inch ball), 800, and 1200 lbs**
- Gross towing weight: 12K maximum
- 2" receiver

## Determining the Correct Hitch for Your Application

Use as a guideline only for initial hitch options. Tongue weight and RV GVWR must be verified to ensure proper hitch set up. Remember, optional equipment, additional cargo in both vehicle and RV, Tow Vehicle GCWR, Tow Vehicle weight rating, and RV GVWR must be accounted for when determining the hitch. You are responsible for your purchase and operation of your hitch.

### SwayPro \*GVWR Min/Max is just an estimate, use a tongue scale to determine correct tongue weight.

Standard Hitch Head	Underslung Hitch Head	GVWR Min	GVWR Max	Tongue Weight Capacity
BXW0350		1300	2300	200-350lb
BXW0550	BXW0553	2301	3700	351-550lb
BXW0750	BXW0753	3701	5000	551-750lb
BXW1000	BXW1003	5001	6600	751-1000lb
BXW1500	BXW1503	6601	10000	1001-1500lb
BXW2000	BXW2003	10001	13400	1501-2000lb, 2.5" Receiver

### TrackPro \*GVWR Min/Max is just an estimate, use a tongue scale to determine correct tongue weight.

Blue Ox Part #	Underslung	GVWR Min	GVWR Max	Tongue Weight Capacity
BXW0650		2300	4000	350-600lb, 2" ball
BXW0850	BXW0853	4001	5300	601-800lb
BXW1050	BXW1053	5301	6600	801-1000lb
BXW1350	BXW1353	6601	8700	1001-1300lb

### 2-Point \*GVWR Min/Max is just an estimate, use a tongue scale to determine correct tongue weight.

Blue Ox Part #	GVWR Min	GVWR Max	Tongue Weight Capacity
BXW0673	2300	4000	350-600lb, 2" ball
BXW0873	4001	5300	601-800lb
BXW1273	5301	8000	801-1200lb

## Considerations for Toy Haulers

In specific toy hauler instances various loading configurations may effect performance without properly calculating the tongue weight.

#### Tongue Weight - ((Toy Weight \*25%) + Fuel Weight) = Actual Tongue Weight

**Example:** If the trailer tongue weighs 1000 lbs., loaded, and a toy is loaded behind the rear axle, weighing 1000 lbs., and the auxiliary fuel tank is fully loaded with 30 lbs. of fuel, the Actual Tongue Weight would equal 720 lbs.

$$1000 - ((1000 * 25\%) + 30) = 720$$

#### Tongue Weight - ((Toy Weight \*12.5%) + Fuel Weight) = Actual Tongue Weight

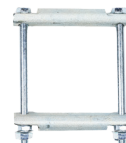
**Example:** If the trailer tongue weighs 1000 lbs., loaded, and a toy is loaded with any portion over the rear axle, weighing 1000 lbs., and the auxiliary fuel tank is fully loaded with 30 lbs. of fuel, the Actual Tongue Weight would equal 845 lbs.

$$1000 - ((1000 * 12.5\%) + 30) = 845$$



### Hitch Locks

- BX88441 Trailer Coupler Lock 1-7/8"-2-5/16"
- BX88402 Universal & Adjustable Pin Style Coupler Lock
- BX88403 Pin Style Coupler Lock & 5/8" x 3" Receiver Lock
- BX88212 Receiver Lock 5/8" x 4" for 2-1/2" Receiver
- BX8858 Receiver Lock 5/8" x 2"



### Hitch Immobilizers

- BX88371 2" Single Pull Immobilizer
- BX88372 2-1/2" Single Pull Immobilizer
- BX88399 3" Single Pull Immobilizer